



# Enhancing Oral Health Through Head Start Health Manager Networks

**Date:**

10/17/2024

**Presenter:**

Steve Shuman

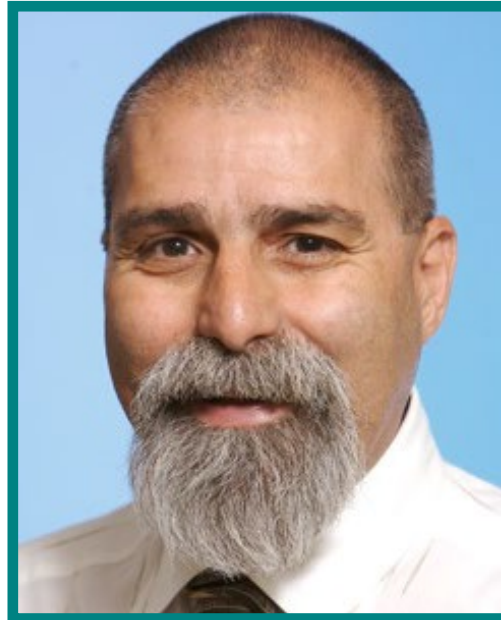


National Center on

Health, Behavioral Health, and Safety



# Today's Presenter



**Steve Shuman, BS**

Director of Outreach and Distance Learning

National Center on Health, Behavioral  
Health, and Safety



# Learning Objectives

## Participants will be able to:

- Define a Head Start health manager network
- Describe how a network is different from an advisory committee.
- Identify appropriate activities and learning opportunities to enhance oral health
- Know how to access and effectively partner with a health manager network



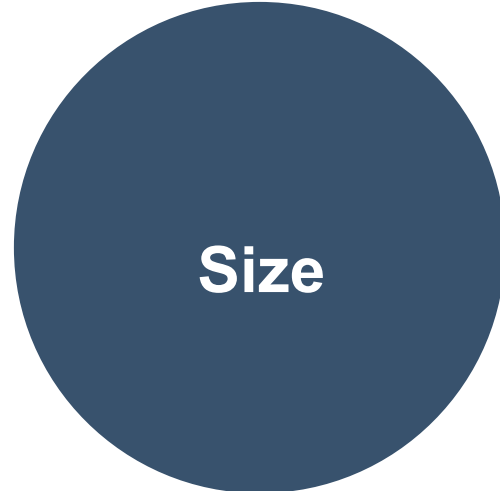


# What is a Health Manager Network (HMN)?



**Membership**

**Leaders of health services**



**Size**

**3 or more staff**



**Shared Aims**

**Common interest in the work**



**Regular Meetings**

**Commitment to meet regularly**





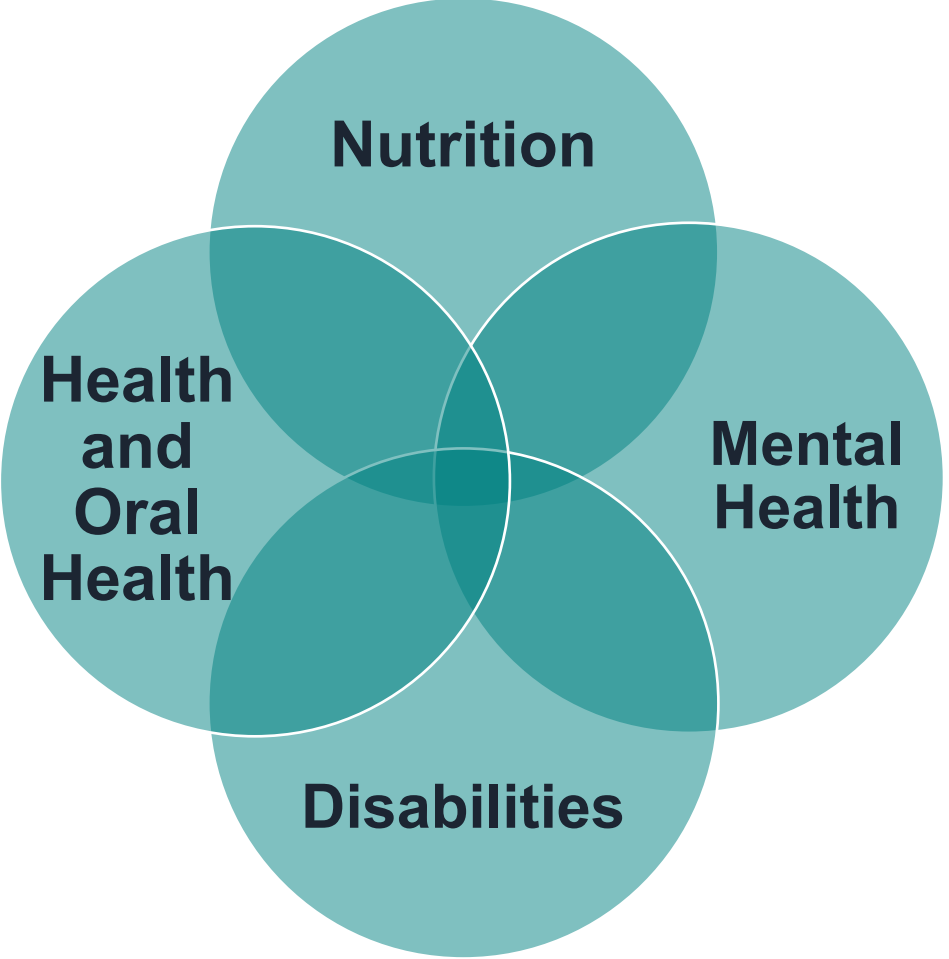


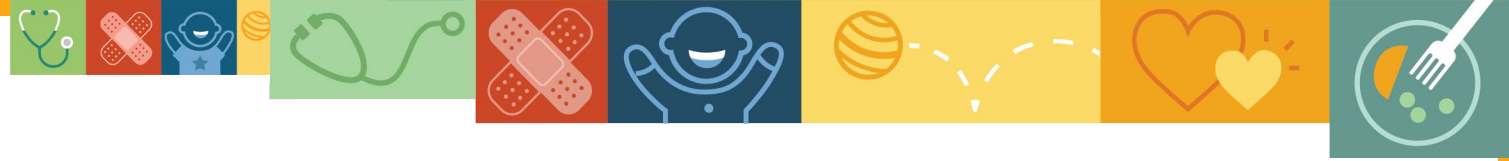
There isn't a Health Manager Network cookie cutter.





# Health Manager Network Members





# Benefits of a Health Manager Network

## A health manager network can:

- Build knowledge
- Offer peer support
- Acknowledge expertise and recognize talents
- Reduce staff turnover
- Strengthen program capacity

## Members report benefits, such as:

- Sharing sample forms, policies, and manuals
- Delivering joint trainings
- Orienting new managers
- Identifying free or low-cost resources



# What is the difference between an HMN and an HMHSAC\*?

## Health and Mental Health Services Advisory Committee

- Required by the Head Start Program Performance Standards (the Performance Standards)
- The Performance Standards do not mention size or meeting frequency
- Some HMHSAC tasks are required by the Performance Standards
- Serves as an advisory group to individual grant recipients
- Made up of program staff, family members, and community representatives
- Meet in person or virtually

## Health Manager Network

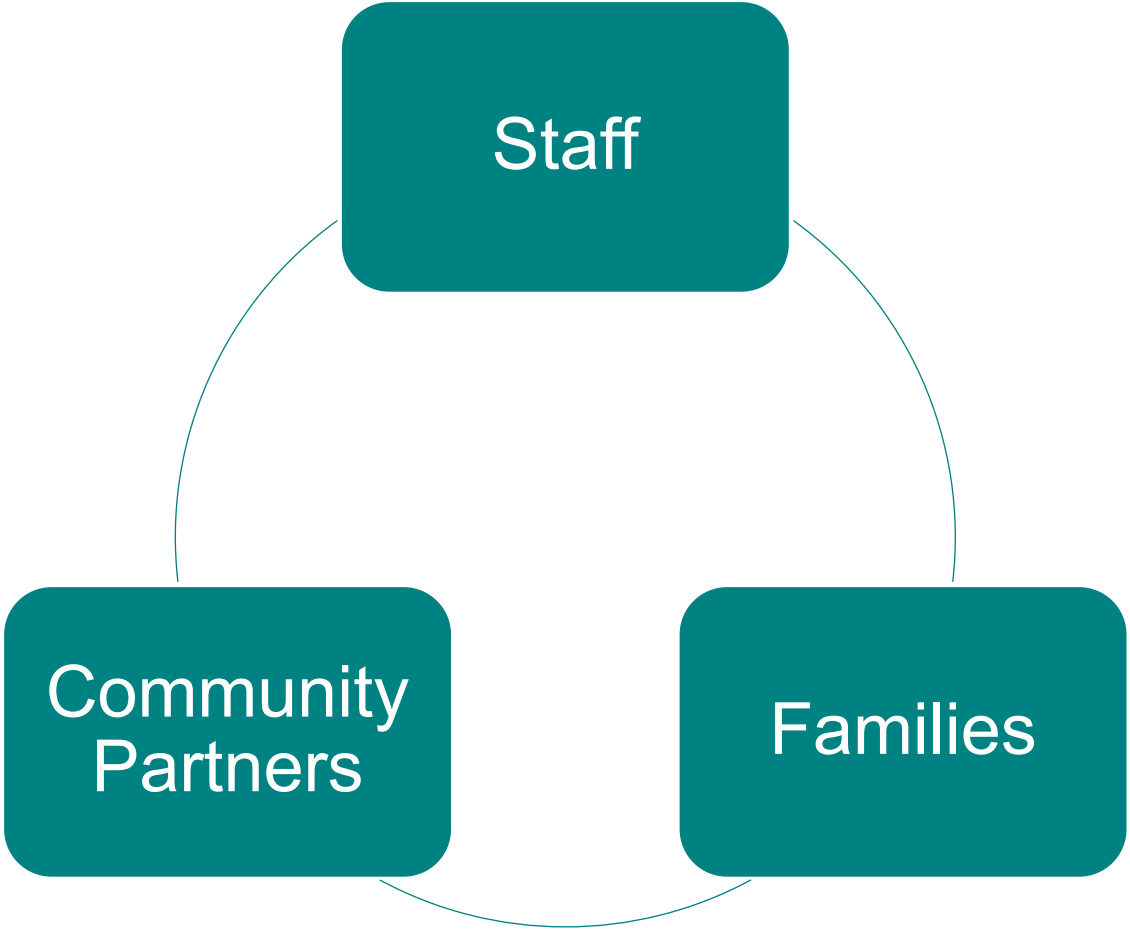
- Not required
- Staff from different programs are usually the only members, with occasional guest speakers
- Members or organizer decide on membership, structure, content, and meeting frequency
- HMNs are usually used for professional development and peer-to-peer activities at the State or Regional level
- Attendance may vary
- Meet in person or virtually”





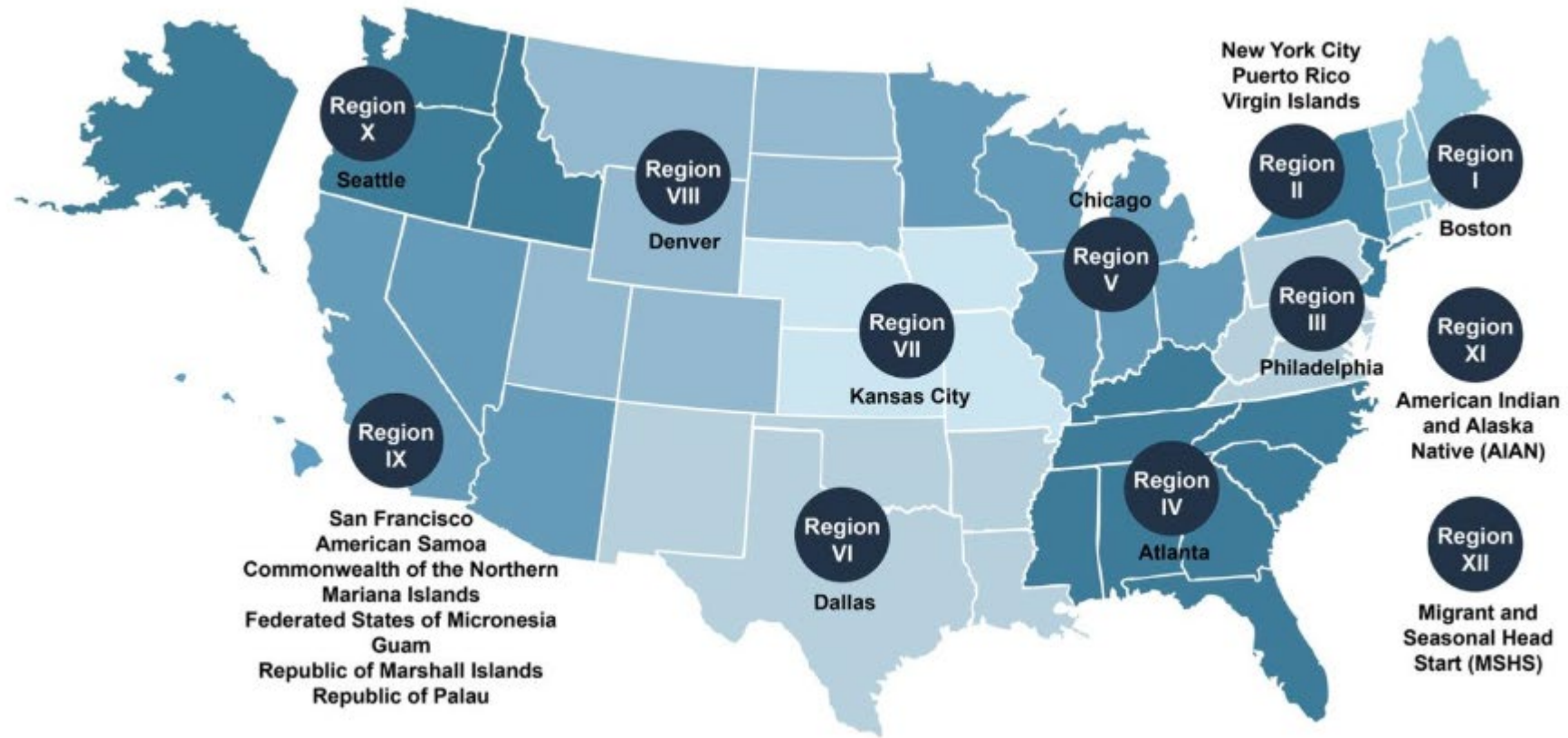


# HMHSAC Members





# >50 Networks in 40 States, Regions, DC and PR





# Getting Access to Health Manager Networks

<https://www.astdd.org/head-start-state-dental-hygienist-liaisons-information>



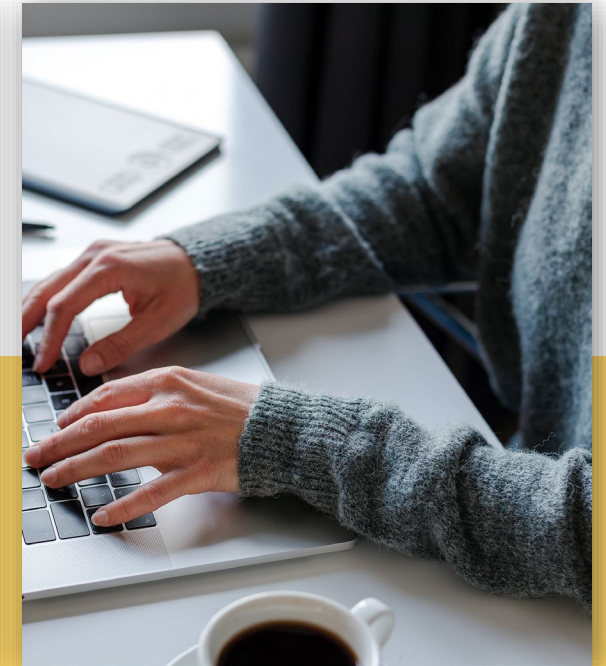
Head Start  
Collaboration  
Offices



State/Regional  
Head Start  
Associations



Regional Health  
Specialists



National Center on  
Health, Behavioral  
Health, and Safety

[health@ecetta.info](mailto:health@ecetta.info)





# MyPeers

- MyPeers is a free social platform for connecting, sharing, and collaborating with fellow early childhood professionals.
- The ECLKC is the official information hub for the Office of Head Start. MyPeers does not necessarily have vetted information.
- More than 20 states, regions, and DC have communities or workgroups of health services staff on MyPeers.

The screenshot displays the MyPeers web application interface. At the top, there is a navigation bar with the MyPeers logo, a search bar (Shift + S), and buttons for History, Pinned, and Compose. The user profile 'Steven' from the 'National Cen...' is visible in the top right. The main content area is titled 'Communities' and features a search bar and filters for 'All Categories' and 'My Communities (37)'. A sidebar on the left lists 'Pinned Communities' including Staff Wellness, Health, Safety & Wellness, Community Admins, Mental Health, Opioid Misuse and Substance..., IMIL, Child Care Health Consultants, Emergency Preparedness, Res..., and Building Community Nutrition P... The main grid shows several community cards, each with a logo and details: Oklahoma Health Manager Network, Alaska Health Manager Network, Texas Health Managers Network, Pennsylvania Health Network, Louisiana Health Managers, Region XII Health Managers, North Dakota HS & EHS Community, Oregon Health Network, and California Health Clusters. The bottom right corner shows 'People (3)' and 'Teams (38)'.



# Share Your Thoughts



Do you know about of any Head Start health networks, clusters, or similar groups in your state, territory, or region?

CHAT





# Sample HMN Activities



**Information Sharing**



**Policy Development**



**Peer Mentoring**



**Promotion of Local Health Activities and Resources**





# Select HMN Learning Opportunities



**Complex Medical Needs**



**Testing Water for Lead**



**Dental Exams**



**Exposure to 2nd and 3rd-hand Smoke**



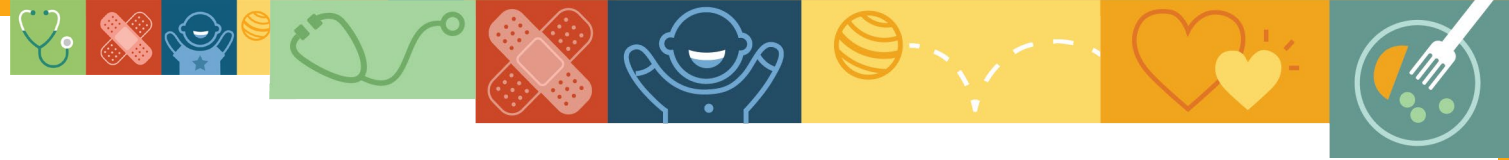
# Share Your Thoughts



Name one past or current activity you shared with Head Start health services staff in your state, territory, or region.

CHAT





# The ABCs of Partnering with HMNs

- Ally
- Bridge Builder
- Contributor







# Opportunities for DHLs to Partner with HMNs

- Engagement
- Collaboration
- Presentations
- Access to care
- Partnerships



- Resource sharing
- Strategies for success
- Demonstrations

*Note:* Refer interpretation of the Performance Standards to federal staff

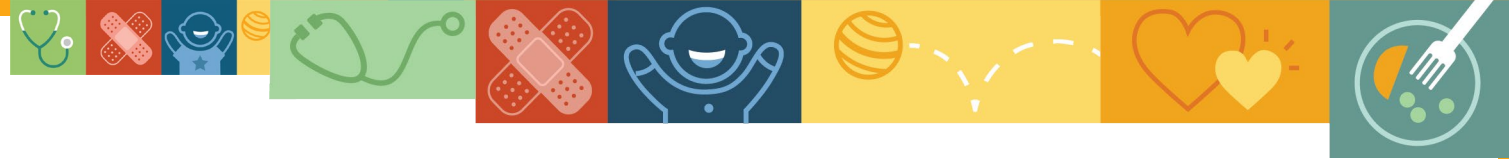


# Share Your Thoughts



What actions might you do after learning more about Health Manager Networks?

CHAT



# HMN Tools

<https://eclkc.ohs.acf.hhs.gov/health-services-management/article/health-manager-network-tools>

## Fostering Leadership

Video of leaders and champions in Virginia and Kansas



## Getting Started

Benefits of building a sustainable network



## What Works

Successful strategies from thriving networks





# Questions?



National Center on  
Health, Behavioral Health, and Safety





**Thank You!**



National Center on  
Health, Behavioral Health, and Safety



# Stay Connected with the



**Office of  
Head Start**

## Follow us on Social Media

---



Head Start  
Facebook



Head Start  
(@HeadStartgov)/X



Head Start  
Instagram

## Join Us

---



Social Network for Early Childhood Professionals  
<https://bit.ly/mypeers-eclkc>



National Center on  
Health, Behavioral Health, and Safety





# National Center on Health, Behavioral Health, and Safety

888-227-5125

[health@ecetta.info](mailto:health@ecetta.info)

<https://eclkc.ohs.acf.hhs.gov/health>

Subscribe to our mailing list at

<https://go.edc.org/HBHS-Contacts>

This presentation is supported by the Administration for Children and Families (ACF) of the United States (U.S.) Department of Health and Human Services (HHS) as part of a financial assistance award totaling \$8,200,000 with 100% funded by ACF. The contents are those of the author(s) and do not necessarily represent the official views of, nor an endorsement by, ACF/HHS or the U.S. Government.



National Center on

Health, Behavioral Health, and Safety

# Links to CE Certificates

Live: insert link for assessment and evaluation <https://survey.alchemer.com/s3/8037181/d4f6e36247fa>

Recorded: <https://survey.alchemer.com/s3/8037181/5811da65d4f6>

# Check out CE Smart from ADHA!

[https://mymembership.adha.org/ce\\_smart#](https://mymembership.adha.org/ce_smart#)

## All ADHA members have access to:

- Unlimited access to FREE and highly discounted CE
- FREE CE Smart Tracker (\$30 value) to track all the credits you earn from all sources
- Expert-led courses and webinars on trending topics, with an always-growing course catalog
- On-demand access with high-level content ready when you want it.

## Non-ADHA members have access to all the same content and the CE Smart Tracker!

- Courses are priced individually based on the number of CEs provided.

Questions?  
Email [education@adha.net](mailto:education@adha.net)

The screenshot shows the ADHA website's navigation menu. A red arrow points from the URL above to the 'Go to CE Smart Catalog' link in the 'Education & Resources' dropdown. Below the navigation, a banner reads 'REGISTRATION OPEN! ADHA23 WELCOMES YOU TO C...'. A text block states: 'Our community of dental hygienists across the practice spectrum find career support, expertise and connections at every stage of the journey.' The 'Course Catalog' section features a search bar, a category filter, and three course cards:

- Clinical**: 1.5 (2021) Clinical Conference. 100-Point Safety Inspection: Infection Control Protocols. Non-Members: \$25.00, Members/Subscribers: \$10.00.
- Research**: 1 (2021) Conference Research. A Fresh Look at String Floss. Non-Members: \$25.00, Members/Subscribers: Free.
- Clinical**: 1.5 (2021) Clinical Conference. AAP Classification of Periodontal Disease. Non-Members: \$25.00, Members/Subscribers: \$10.00.